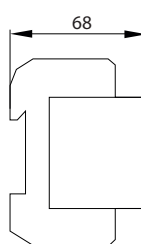
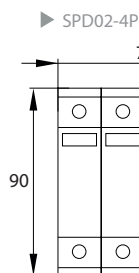
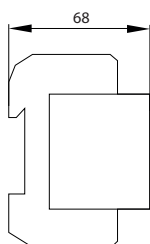
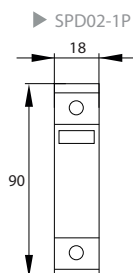
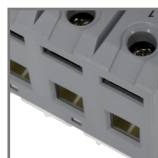


SPD02-4P



SPD02-1P

MOV  
varistorgalvanised  
steel terminalterminal capacity: max.  
35 mm<sup>2</sup>capability to  
connect using comb  
busbars

Schelinger



code

EAN



package



class/type

 $U_p$ voltage  
protection level [kV] $I_{imp}$   
(10/350  $\mu$ s)inrush current  
[kA] $I_n$   
(8/20  $\mu$ s)rated  
discharge current [kA] $I_{max}$   
(8/20  $\mu$ s)limit  
discharge current [kA]

A51-SPD02-1P-B+C

5900280964571

1/144

B+C / T1+T2

≤ 1.5

8

20

50

A51-SPD02-4P-B+C

5900280958143

1/36

B+C / T1+T2

≤ 1.5

8

20

50

\* Replaceable inserts available from Schelinger